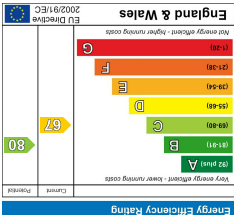
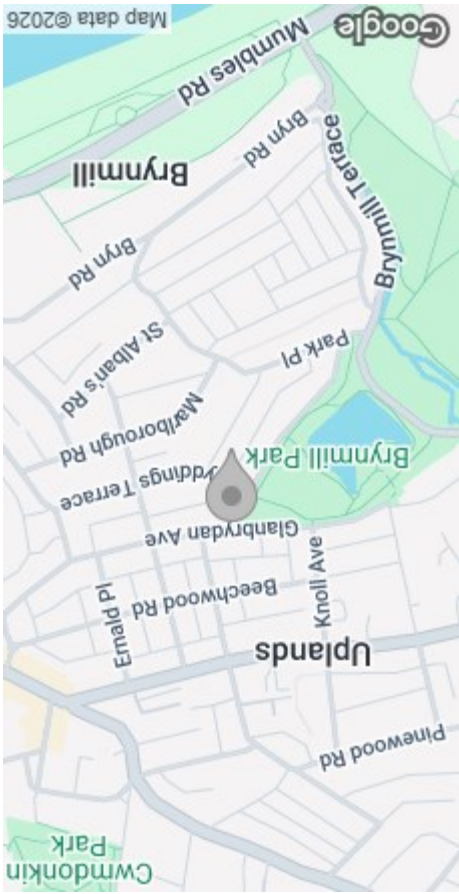


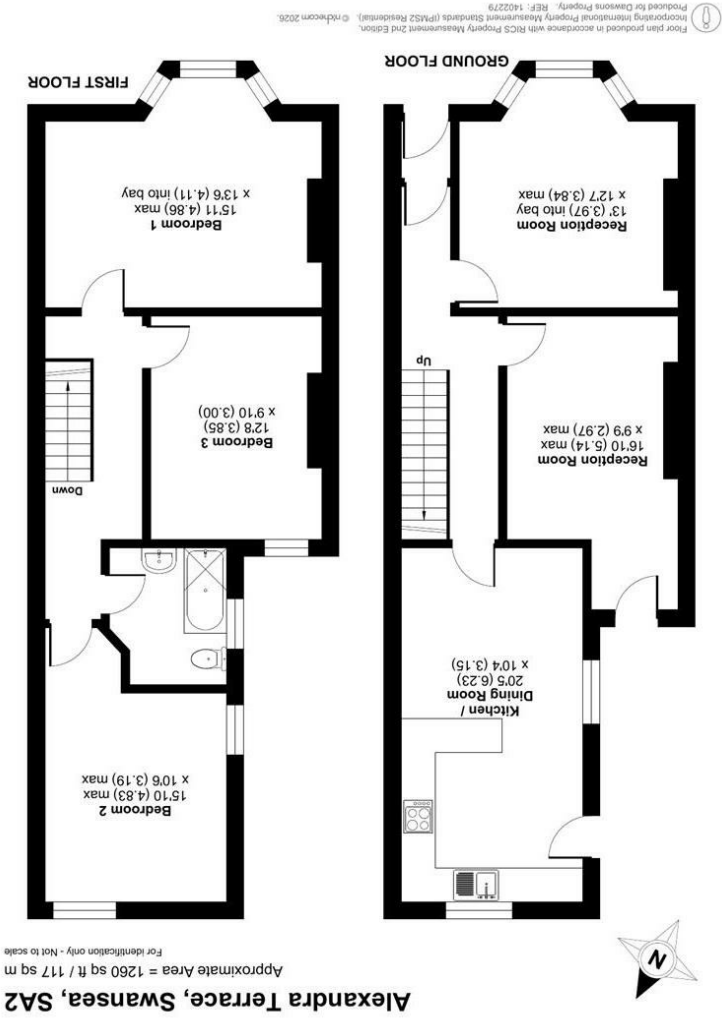
These particulars, whilst believed to be accurate are set out as a general outline only for guidance and do not constitute any part of an offer or contract. Intending purchasers should not rely on them as statements or representations of fact, but must satisfy themselves by inspection or otherwise as to their accuracy. No person in this firm's employment has the authority to make or give any representation or warranty in respect of the property.



EPC



AREA MAP



FLOOR PLAN



18 Alexandra Terrace
Brynmill, Swansea, SA2 0DU
Offers Over £180,000



GENERAL INFORMATION

Dawsons are delighted to offer for sale this mid-terrace property, ideally located in the highly regarded Brynmill area of Swansea.

The accommodation comprises an entrance porch, hallway, two reception rooms, and a kitchen/dining room to the ground floor. To the first floor, there are three bedrooms and a bathroom.

Externally, the property benefits from a small front garden and an enclosed rear garden.

The property is superbly positioned close to Swansea Bay, Singleton Park, Singleton Hospital, and Swansea University, while also offering easy access to local schools, amenities, and the vibrant Uplands Quarter with its popular bars and restaurants.

Considered an ideal family home or investment opportunity.

Viewing is highly recommended to appreciate the location and potential this property has to offer.

FULL DESCRIPTION

Ground Floor

Entrance

Porch

Reception 1
13'0" (into bay) x 12'7" (max)
(3.97m (into bay) x 3.84m (max))

Reception 2
16'10" (max) x 9'8" (max)
(5.14m (max) x 2.97m (max))

Kitchen/Dining Room
20'5" x 10'4" (6.23m x 3.15m)

First Floor

Landing



Bedroom 1
15'11" (max) x 13'5" (into bay)
(4.86m (max) x 4.11m (into bay))

Bedroom 2
15'10" (max) x 10'5" (max)
(4.83m (max) x 3.19m (max))

Bedroom 3
12'7" x 9'10" (3.85m x 3.00m)



Bathroom

External

Small Front Garden

Garden to Rear

Tenure - Freehold

Council Tax Band - D

EPC-D

Services

Mains Gas & Electric
Mains Sewerage

Water - Billed

"Broadband - The current supplier is (Virgin). The broadband type is Cable.

"Mobile - There are no known issues with mobile coverage using the vendor's current supplier, [O2].

You are advised to refer to the Ofcom checker for information regarding mobile signal and broadband coverage.

